



juice pack

Made for Samsung Galaxy S10,
Galaxy S10e, Galaxy S10+

USER MANUAL

Welcome

Thank you for purchasing the mophie juice pack battery case for Samsung Galaxy S10, Galaxy S10e or Galaxy S10+. Your juice pack battery case gives your phone high-impact protection and enough power to go all day without your needing to find a power outlet. Recharging your juice pack battery case and phone couldn't be any easier — simply place the juice pack battery case on any mophie wireless charging pad or any other Qi-compatible charger.

Package Contains

- mophie juice pack battery case made for Samsung Galaxy S10, Galaxy S10e or Galaxy S10+
- Quick-start guide

Features

Your mophie juice pack battery case's lithium-ion polymer rechargeable battery extends the battery life of your phone for hours with extra battery whenever you need it, all while providing a comfortable ergonomic design and the complete protection of a hard-shell case.

Here are just some of the reasons why your juice pack battery case is so great:

- Wireless charging — you can simply place the juice pack battery case on a mophie wireless charging pad or any other Qi-compatible wireless charger to immediately begin recharging the phone and case.
- (Take a breath) Ergonomic, form-fitting, fully protective impact-resistant case-and-battery-in-one made for Galaxy S10, Galaxy S10e or Galaxy S10+
- High-impact protection — built to protect against drops and hard falls.
- A 3-second press of the status button allows you to charge your phone whenever it needs it. If you want to stop charging your phone and save some battery for later, just press the button again for 3 seconds. However, even in standby mode your phone still has high-impact protection.
- Priority+[®] charging provides power to your phone first before the juice pack battery starts to recharge.
- Track battery power at a glance with the integrated four-LED status indicator. You can keep tabs on charging status and current battery life. Know before you go!

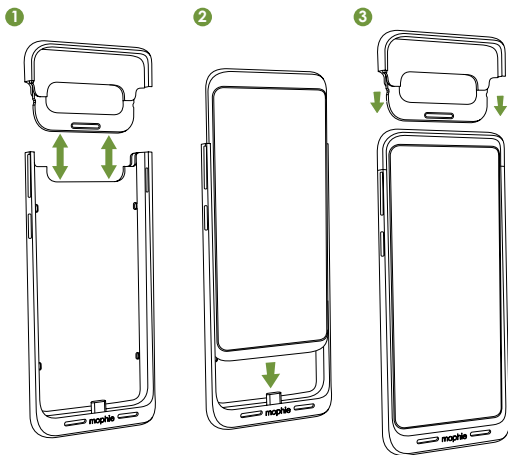
- Built in short-circuit, over-charge, over-discharge, and temperature protection, so you can charge with confidence. Safety first!

Compatibility

- The mophie juice pack battery case made for Galaxy S10 is designed and intended solely for the Samsung Galaxy S10 smartphone. Please do not attempt to use it with any other device.
- The mophie juice pack battery case made for Galaxy S10e is designed and intended solely for the Samsung Galaxy S10e smartphone. Please do not attempt to use it with any other device.
- The mophie juice pack battery case made for Galaxy S10+ is designed and intended solely for the Samsung Galaxy S10+ smartphone. Please do not attempt to use it with any other device.
- The mophie juice pack battery cases made for Galaxy S10, Galaxy S10e and Galaxy S10+ will charge wirelessly from any mophie wireless charging pad or any Qi-compatible wireless charger, including those used on airline flights and in coffee houses, furniture products, and consumer vehicles.

Installing your juice pack battery case

1. Separate the top and bottom juice pack case sections.
2. Slide your Galaxy S10, Galaxy S10e or Galaxy S10+ phone all the way into the bottom section of the juice pack case so that USB-C connector in the case is fully inserted into the USB-C port in the phone.
3. Slide the top section of the juice pack case all the way over the exposed top of the phone so that it snaps into the bottom section of the case.

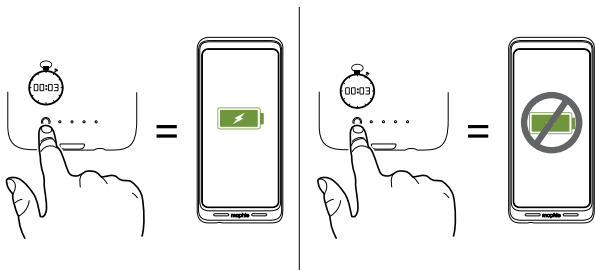


Charging your phone using your juice pack battery case

IMPORTANT: Before using your juice pack battery case for the first time, fully charge it (so that pressing the charge status button lights all 4 LEDs).

To begin charging your phone, press the status button for 3 seconds. The status LEDs will flash in sequence away from the status button 3 times, indicating that the juice pack battery has begun charging the phone.

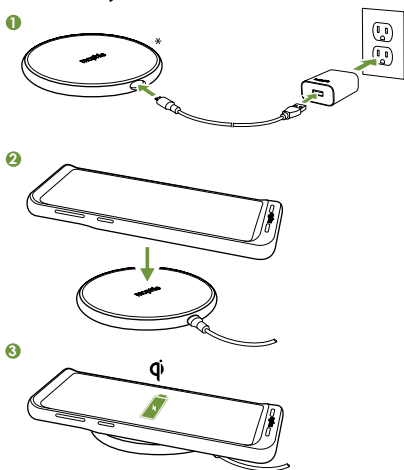
If you want to stop charging your phone and save some battery for later, just press the status button again for 3 seconds. The status LEDs will flash in sequence towards the status button 3 times, indicating that the juice pack battery has stopped charging the phone.



Charging your juice pack battery case (wireless)

Your juice pack battery case will charge wirelessly from mophie wireless charging pads and all Qi-compatible wireless chargers, including those used on airline flights and in coffee houses, furniture products, and consumer vehicles.

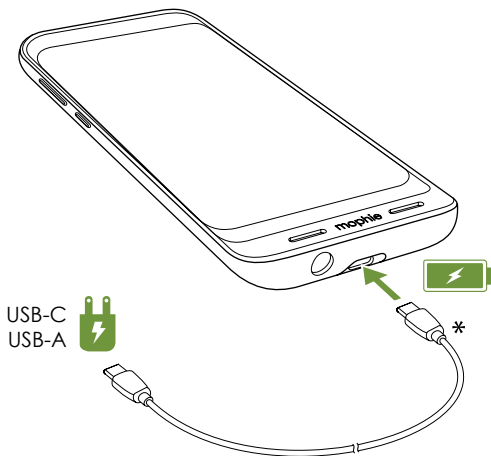
1. Connect the mophie wireless charging pad or other wireless charging base to a wall outlet according to its instructions.
2. Place the juice pack case on the mophie wireless charging pad or other wireless charging base.
3. Make sure that the juice pack case is centered on the charging base. Charging will begin automatically.



*mophie charge stream pad not included

Charging your juice pack case (wired)

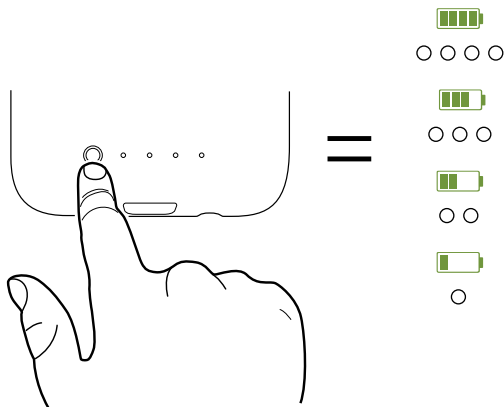
Use the USB-C cable supplied with your phone to charge your juice pack battery case by connecting it to the USB-C wall adapter included with your phone, or to a USB-C car charger. This will allow the case and phone to charge at the fastest speeds available from the adapter or charger.



*Charging cable not included

Checking your juice pack battery case's charging status

Momentarily press the status button on your juice pack battery case and the status LEDs will indicate its charge level. Four LEDs means that the case is fully charged, while one LED means that it's almost empty. Know before you go!



Taking care of your juice pack battery case

- Keep your juice pack battery case dry and away from moisture and corrosive materials.
- Do not clean your juice pack battery case with harsh chemicals, soaps or detergents. Just wipe it with a soft, water-dampened cloth.
- Make sure the juice pack battery case's USB port does not become contaminated with lint or other debris. Use a canned-air type of product periodically to ensure that the port opening is clear.
- Recharge your juice pack battery case once every three months when not in use. If you plan on putting it away, charge it for one hour first.

Warranty

At mophie, we are dedicated to making the best quality products. To back this up, this product is warranted for 2 years. For full details regarding warranty terms and exclusions, please visit: mophie.com/warranty. This warranty does not affect any statutory rights that you may be entitled to. Keep a copy of your purchase receipt as proof of purchase. Be sure to register your product at mophie.com. Failure to register your product and/or provide proof of purchase may void the warranty.

Exclusions & Limitations

Except for the limited warranty expressly set forth or to the extent restricted or prohibited by

applicable law, mophie expressly disclaims any and all other warranties express or implied, including any warranty of quality, merchantability, or fitness for a particular purpose, and you specifically agree that mophie shall not be liable for any special, incidental, indirect, punitive, or consequential damages of any type on any mophie product. In addition to and without limiting the generality of the foregoing disclaimers, the limited warranty does not, under any circumstances, cover the replacement or cost of any electronic device or personal property inside or outside of the mophie product.

You may have additional warranty rights depending on your country, state, or province. Further, some countries, states, and provinces do not allow the exclusion or limitation of incidental or consequential damages or exclusions or limitations on the duration of implied warranties, so the above may not apply to you. If any provision of the warranty is found unlawful, void, or unenforceable, that provision shall be deemed severable and shall not affect any remaining provision.

Customer service

Telephone: 1-888-8mophie

International: +1 (269) 743-1340

Web: www.mophie.com/cs

IMPORTANT SAFETY INSTRUCTIONS

Warning

Read all instructions and warnings prior to using this product. Improper use of this product may result in product damage, excess heat, toxic fumes, fire, or explosion, for which damages you (“Purchaser”), and not mophie llc (“Manufacturer”) are responsible.

- ⓧ Before using your juice pack battery case for the first time, fully charge it (so that pressing the charge status button lights all four status LEDs).
- ⓧ We recommend that you remove your phone from the juice pack case before using the Wireless PowerShare feature.
- ⓧ For Galaxy S10e only: We recommend that you reprogram your Galaxy S10e fingerprint sensor after you install your phone in the juice pack case.
- ⓧ Do not store product in high-temperature environment, including heat caused by intense sunlight or other forms of heat. Do not place product in fire or other excessively hot environments. Exposure to fire or temperature above 212°F (100°C) may cause explosion.
- ⓧ Be cautious of drops, bumps, abrasions, or other impacts to this product. If there is any damage to the product such as dents, punctures, tears, deformities, or corrosion due to any cause,

discontinue use. Contact Manufacturer or dispose of it in an appropriate manner at your local battery-recycling center.

- X-Ⓢ Do not expose the battery case to rain or snow.
- X-Ⓢ Do not put fingers or hands into the product.
- X-Ⓢ Do not disassemble this device or attempt to re-purpose or modify it in any manner.
- X-Ⓢ For questions or instructions for the various ways to charge this device, refer to the illustrations in this quick-start guide.
- X-Ⓢ Use of a power supply or charger not recommended by mophie may result in a risk of fire or injury to persons.
- X-Ⓢ Do not use the battery case in excess of its output rating. Overloading outputs above rating may result in a risk of fire or injury to persons.
- X-Ⓢ Do not attempt to replace any part of this device.
- X-Ⓢ If this device is intended by Purchaser to be used by a minor, purchasing adult agrees to provide detailed instructions and warnings to any minor prior to use. Failure to do so is sole responsibility of Purchaser, who agrees to indemnify Manufacturer for any unintended use/misuse by a minor.
- X-Ⓢ All products have gone through a thorough quality assurance inspection. If you find that your product is excessively hot, is emitting odor, is deformed, abraded, cut or is experiencing

or demonstrating an abnormal phenomenon, immediately stop all product use and contact Manufacturer.

- ☠ Never dispose of batteries in the garbage. Disposal of batteries in the garbage is unlawful under state and federal environmental laws and regulations. Always take used batteries to your local battery-recycling center.
- ☠ Switch off the battery case when not in use. The battery case will automatically switch off when disconnected from a device.

SAVE THESE INSTRUCTIONS

Legal

This product is meant for use only in conjunction with the appropriate device. Please consult your device packaging to determine whether this product is compatible with your particular device. Manufacturer is not responsible for any damages to any device incurred through the use of this product.

Manufacturer shall not in any way be liable to you or to any third party for any damages you or any third party may suffer as a result of use, intended or unintended, or misuse of this product in conjunction with any device or accessory other than the appropriate device for which this product is designed. Manufacturer will not be responsible for any damages you or any third

party may suffer as a result of misuse of this product as outlined above. Purchaser agrees to defend, indemnify, and hold Manufacturer harmless for any claims or damages arising from unintended use or misuse, including use with an unintended device.

mophie, juice pack, Stay Powerful, mophie loves you, the five-circles design, and the mophie logo are trademarks of mophie inc. Samsung and Galaxy are trademarks of Samsung Electronics Co., Ltd. The 'Qi' symbol is a trademark of the Wireless Power Consortium. USB-C is a trademark of USB Implementers Forum. All rights reserved. Patents: mophie.com/patents.

This device complies with part 15 of the FCC Rules and RSS-Gen of IC Rules. Operation is subject to the following two conditions: (1) This device may not cause harmful interference, and (2) this device must accept any interference received, including interference that may cause undesired operation.

NOTE: This equipment has been tested and found to comply with the limits for a Class B digital device, pursuant to part 15 of the FCC Rules. These limits are designed to provide reasonable protection against harmful interference in a residential installation. This equipment generates, uses, and can radiate radio frequency energy and, if not installed and used in accordance with the instructions, may cause harmful

interference to radio communications. However, there is no guarantee that interference will not occur in a particular installation.

If this equipment does cause harmful interference to radio or television reception, which can be determined by turning the equipment off and on, the user is encouraged to try to correct the interference by one or more of the following measures:

- Reorient or relocate the receiving antenna.
- Increase the separation between the equipment and receiver.
- Connect the equipment into an outlet on a circuit different from that to which the receiver is connected.
- Consult the dealer or an experienced technician for help.

CAUTION: To comply with the limits of the Class B digital device, pursuant to Part 15 of the FCC Rules, this device must be used with certified peripherals and shielded cables. All peripherals must be shielded and grounded. Operation with non-certified peripherals or non-shielded cables may result in interference to radio or reception.

MODIFICATION: Any changes or modifications of this device could void the warranty.

WEEE DECLARATION

All of our products are marked with the WEEE symbol; this indicates that this product must NOT be disposed of with other waste. Instead it is the user's responsibility to dispose of their waste electrical and electronic equipment by handing it over to an approved re-processor, or by returning it to mophie, inc. for reprocessing. For more information about where you can send your waste equipment for recycling, please contact mophie, inc. or one of your local distributors.

THIS DEVICE CONFORMS TO UL STD 60950-1. CERTIFIED TO CSA STD. C22.2 NO. 60950-1, CONFORMS TO UL SUBJECT 2056.

 STAY POWERFUL™